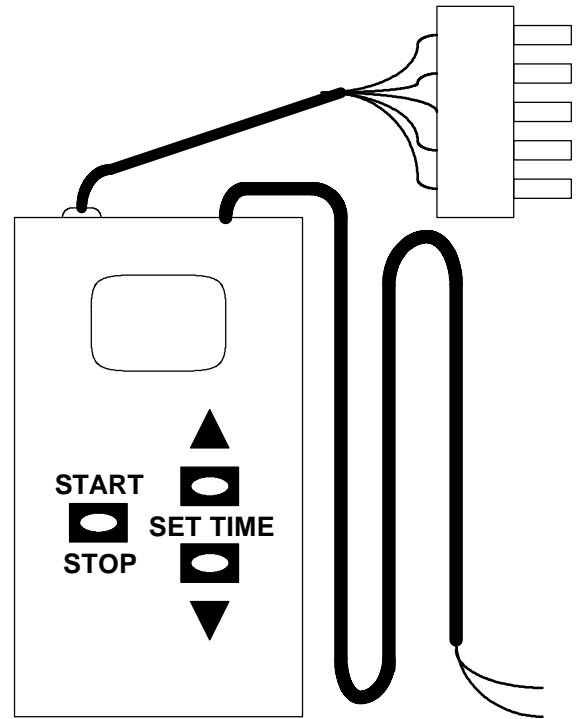


# TanTime Third Party Interface

Part Number  
TT-TPI

For Sun Capsule OEM Timers  
Software Version 6.5 or Above



The Third Party Interface (TPI) is provided to allow another timer to control the Sun Capsule timer remotely. This is often done when a front room controller not manufactured by TanTime is used.

## Connecting the Interface

The TPI Cable simply plugs into the 6 contact modular connector of the top of the timer. The other end of the cable is two wires that need to be connected to a dry contact of the controlling timer.

## Operation

When the controlling timer closes the dry contacts the Sun Capsule timer will display it's maximum time and the bed will turn on and the timer will start counting down. The bed will run until either the controlling timer times out and opens the contacts or the Sun Capsule timer times out (reaches maximum time.) The remote Start/Stop switch on the bed may be used as an emergency stop switch, but starting the session is completely under the control of the remote timer.

In this mode, the Sun Capsule timer becomes a slave of the controlling timer with the following characteristics:

- With the TPI Cable connected, the timer may be tested by shorting the two wires at the end of the cable together to start the timer at it's maximum time. Opening them will return the timer to "00" and time can not be set on the timer.
- Attempting to manually set time on the Sun Capsule timer after the TPI Cable wires have been connected together will cause the display to blink and stay at "00".
- To return the timer to normal mode, open the wires at end of the TPI Cable or remove the cable and turn the Sun Capsule timer off and on again.
- The Sun Capsule will **never** run longer than the maximum time programed into it at the factory, regardless of the time set on the remote timer.