

Purpose of This Document

The following document provides guides for setting up and trouble shooting a tanning bed timer installation. The installation may be one using a single tanning bed timer, a tanning bed timer operating as a Slave to a Master timer, or a complete timer network working with a Front-Room-Controller.

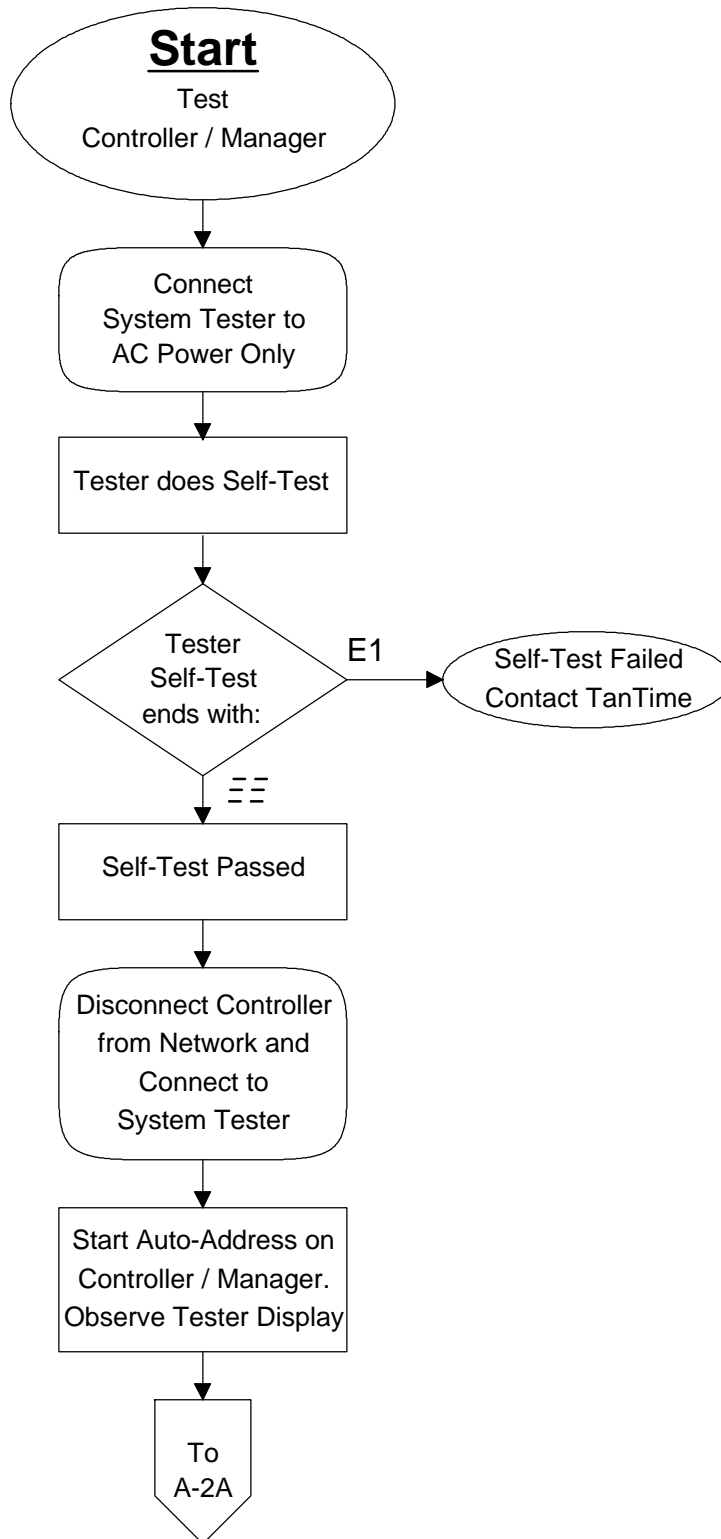
These guides are provided in the form of “Flow Charts” showing the process of testing and possible results each step of the way. The testing is made simple with the aid of the TanTime™ System Scanner Tester (SY-ST). This tester is available from TanTime™.

The Flow Charts are organized by lettered sections. Each section also has numbered pages within each section. These sections and letter designations are as follows:

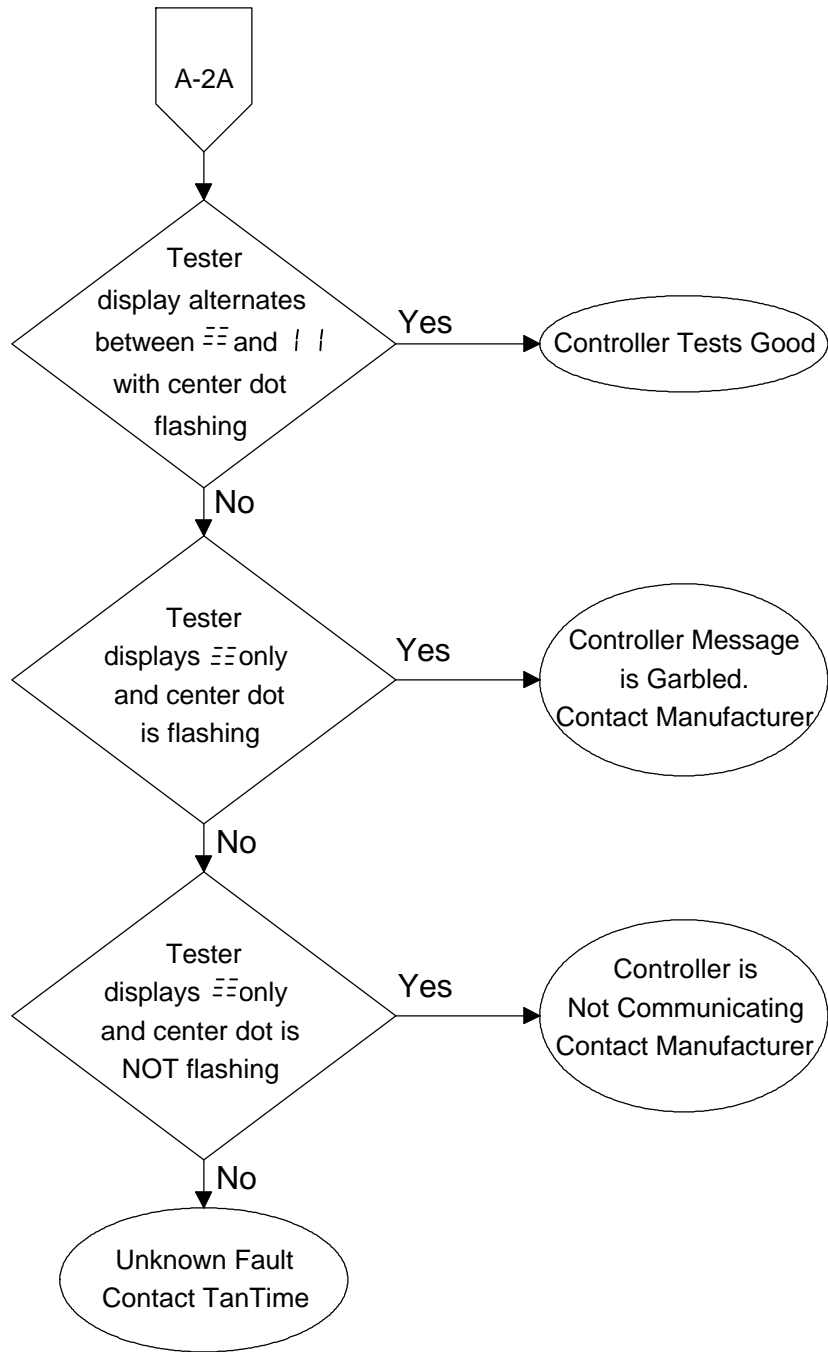
Section	Flow Chart Name	For Testing:
A	Testing a Controller / Manager	For testing a TanTime™ or T-Max® Front-Room-Controller
B	Testing a Timer Network	Use to test the entire Network when the Front-Room-Controller is disconnected or off
C	Testing a Single Timer	
D	Auto Addressing	Use to set an address for a single timer or a complete network of timers
E	Setting Timer Parameters	Prestart Delay (Pd) Cool Down (Cd) Pause mode (P) Clean Bed (Cb) Clean Clear (CC) Lock Out (LO)
F	Testing a Master Timer	Testing a timer set to address 0
G	Overview of Testing a Network	An overview of “Testing a Timer Network”

Refer to the appropriate section for your setup or testing needs. It is recommended that you should test your Front-Room-Controller before testing the rest of the Network. Note that the Front-Room-Controller must not be connected to the network for the Tester to be able to test the network.

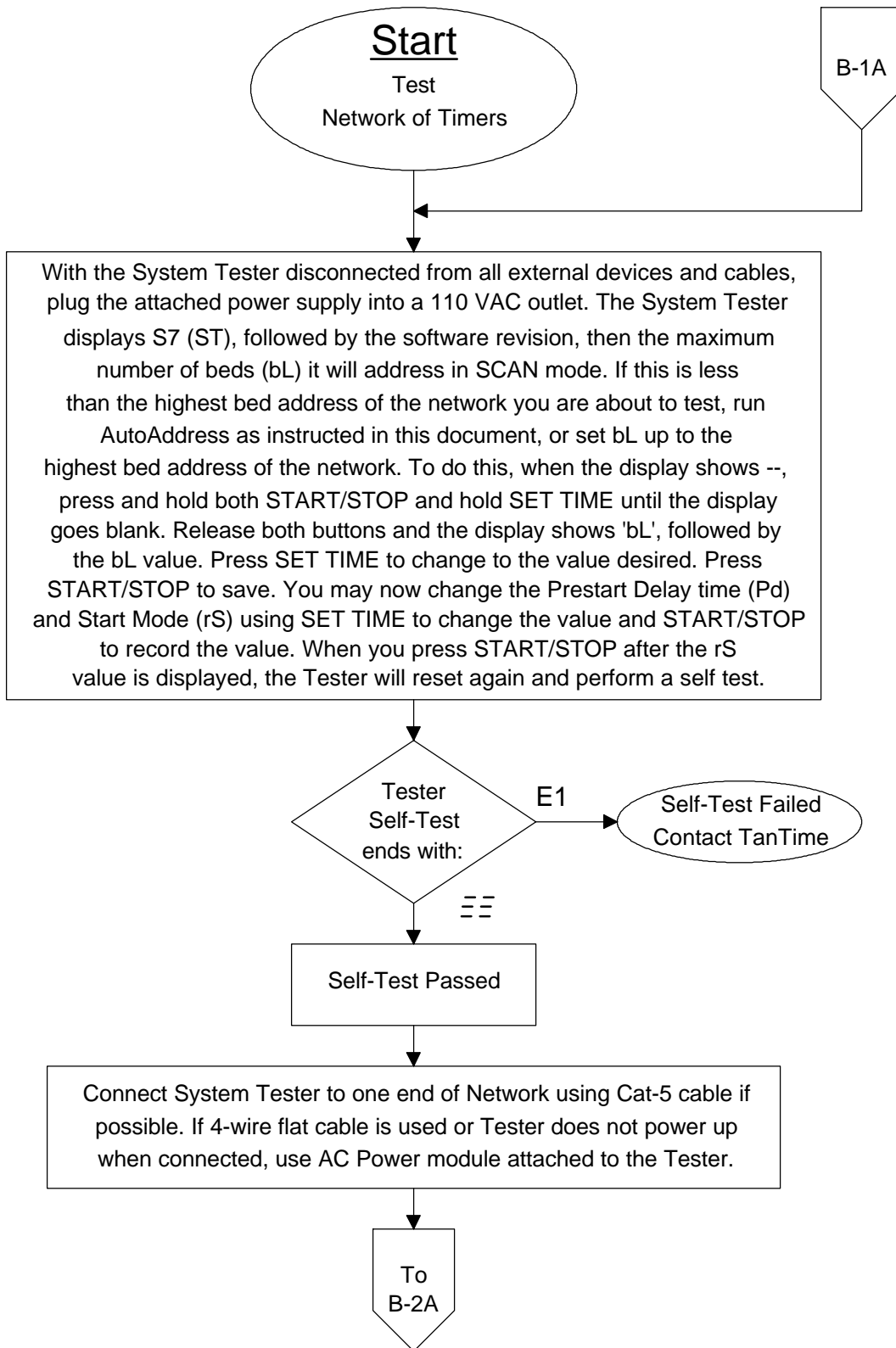
Testing a Controller / Manager



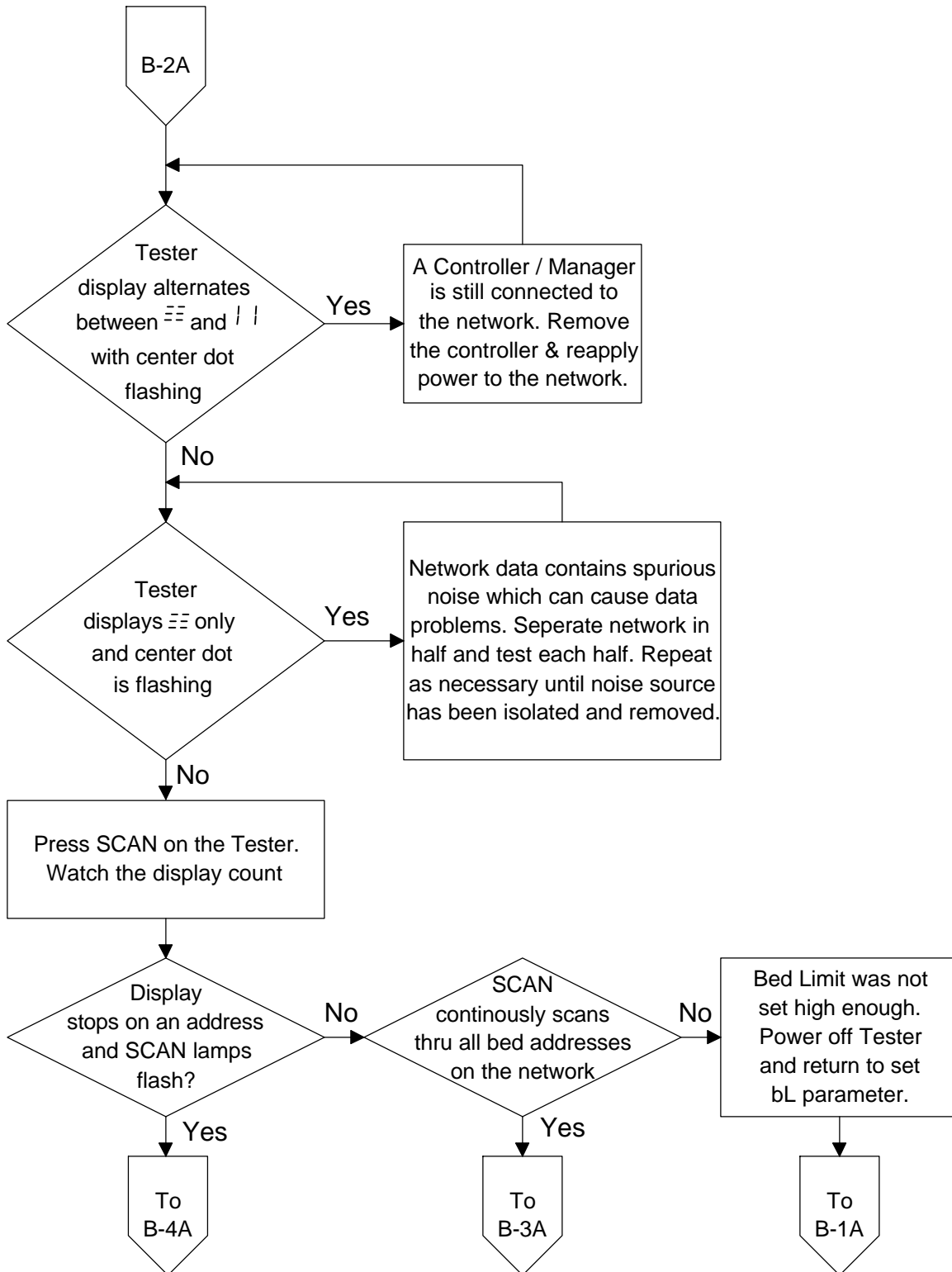
Testing a Controller / Manager



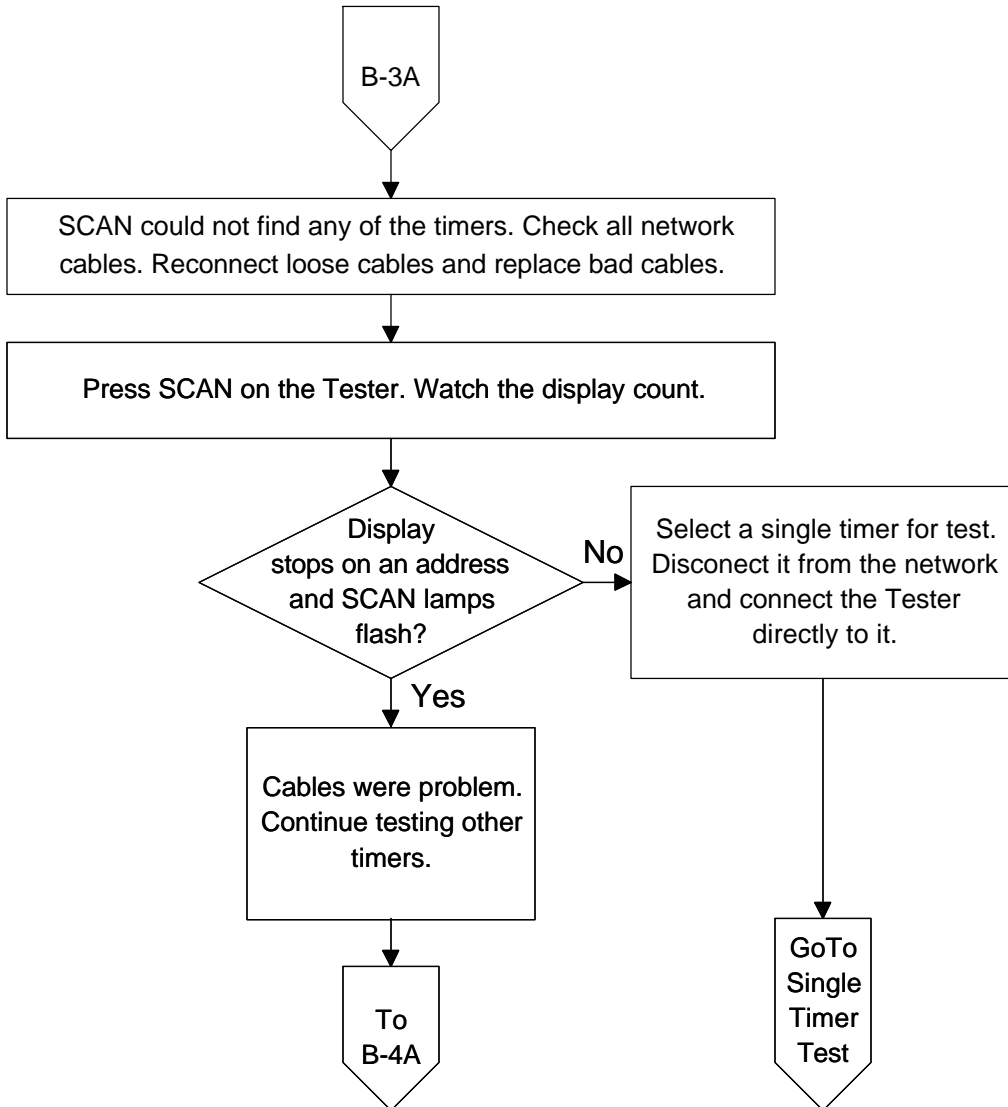
Testing a Timer Network



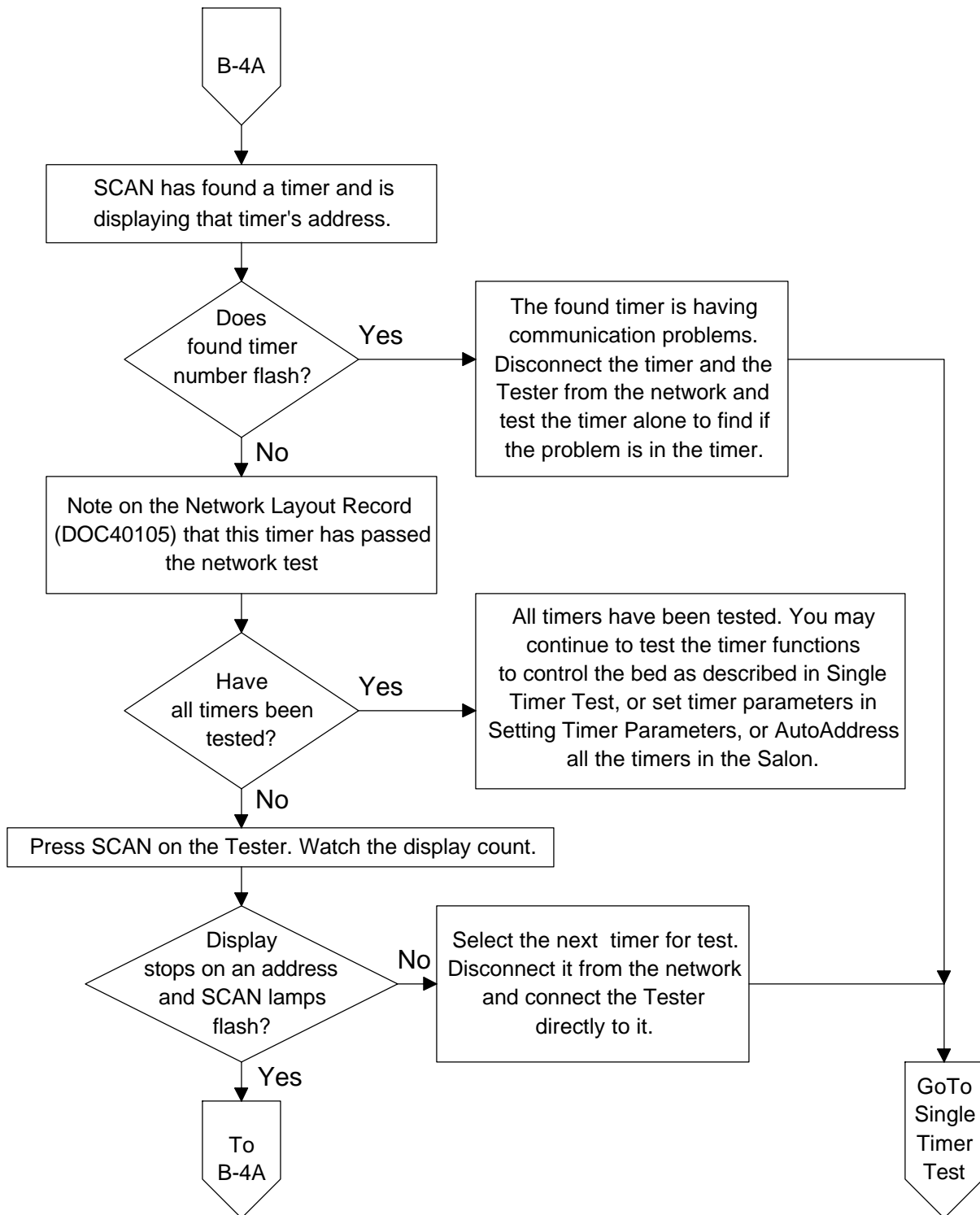
Testing a Timer Network



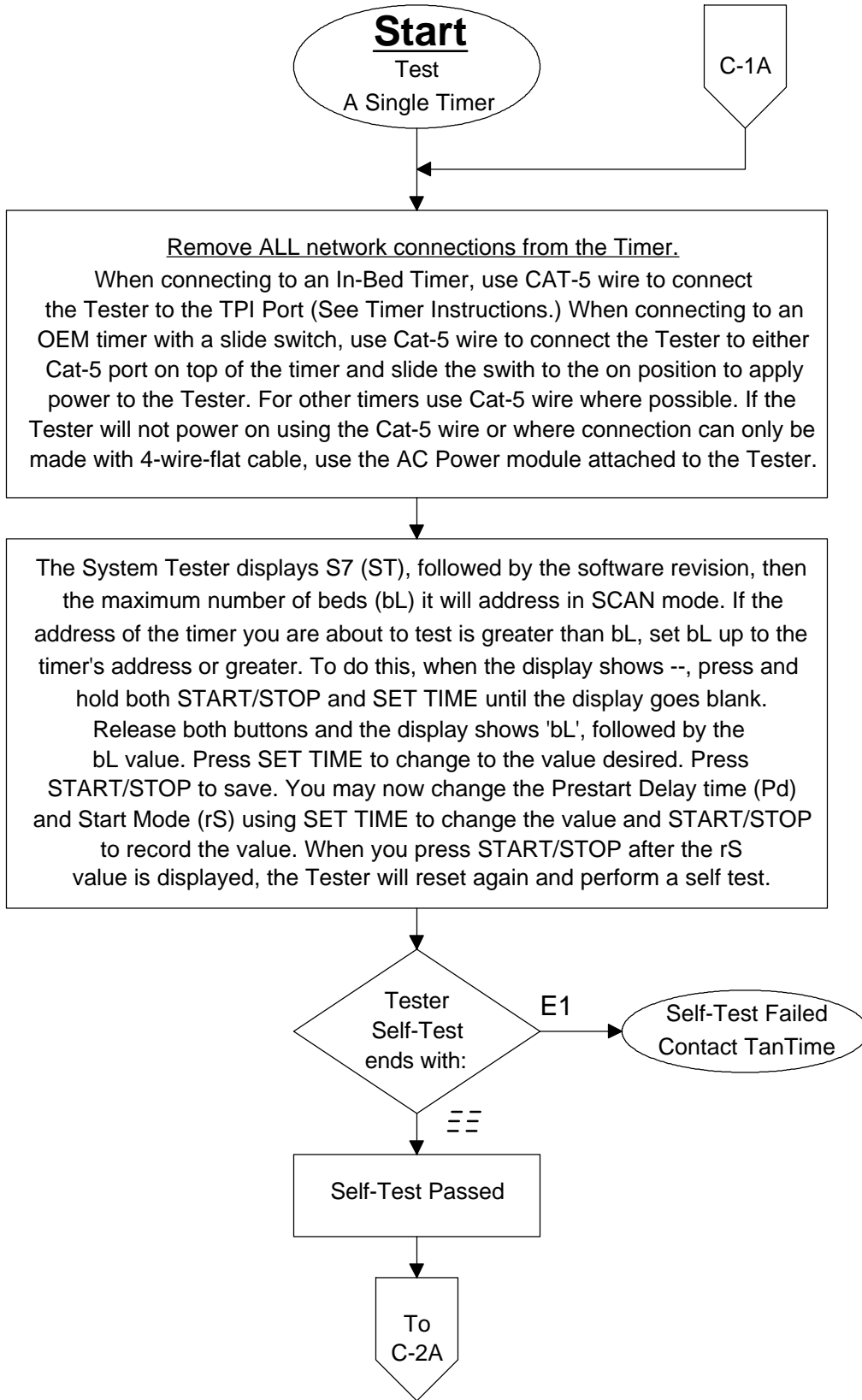
Testing a Timer Network



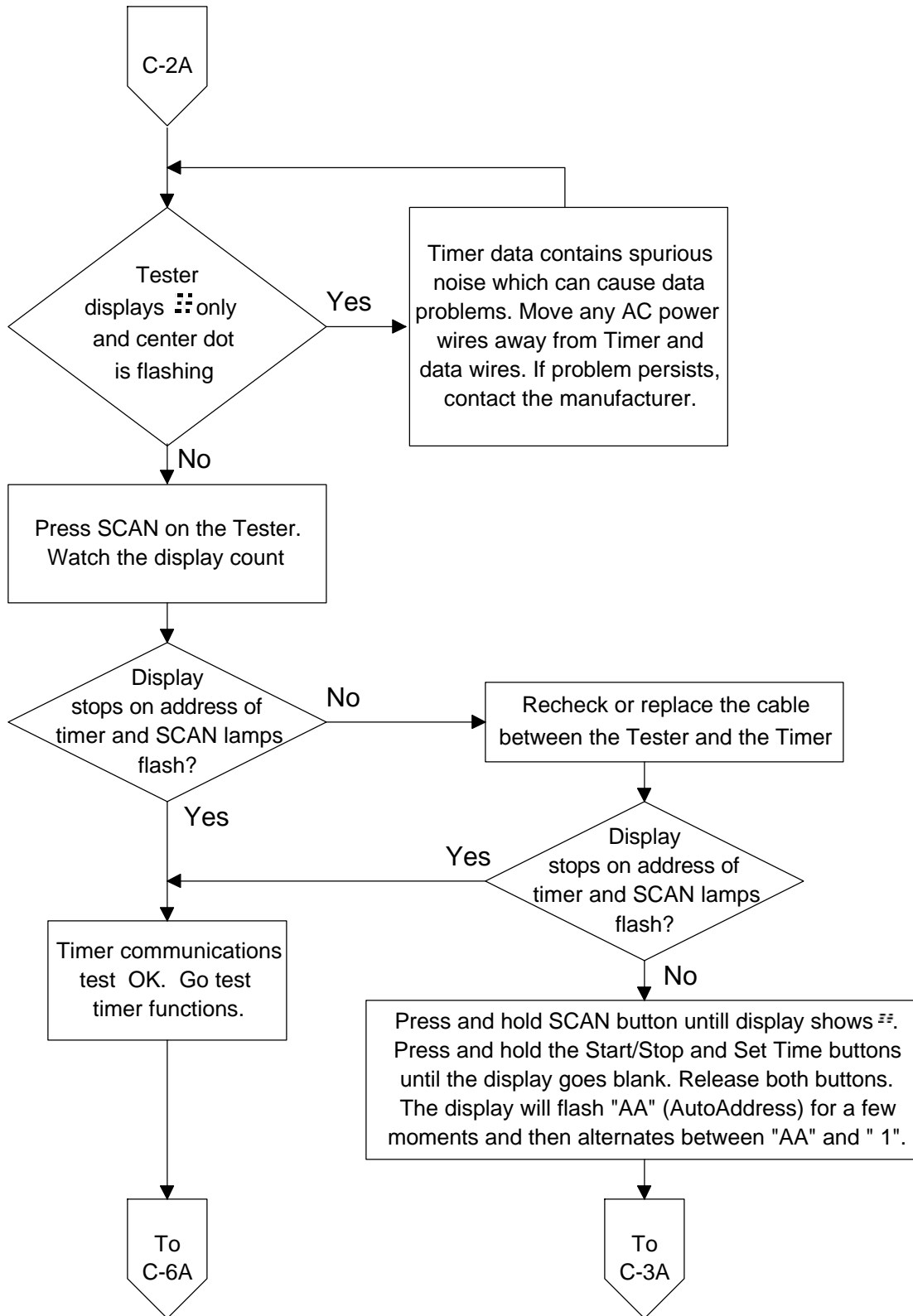
Testing a Timer Network



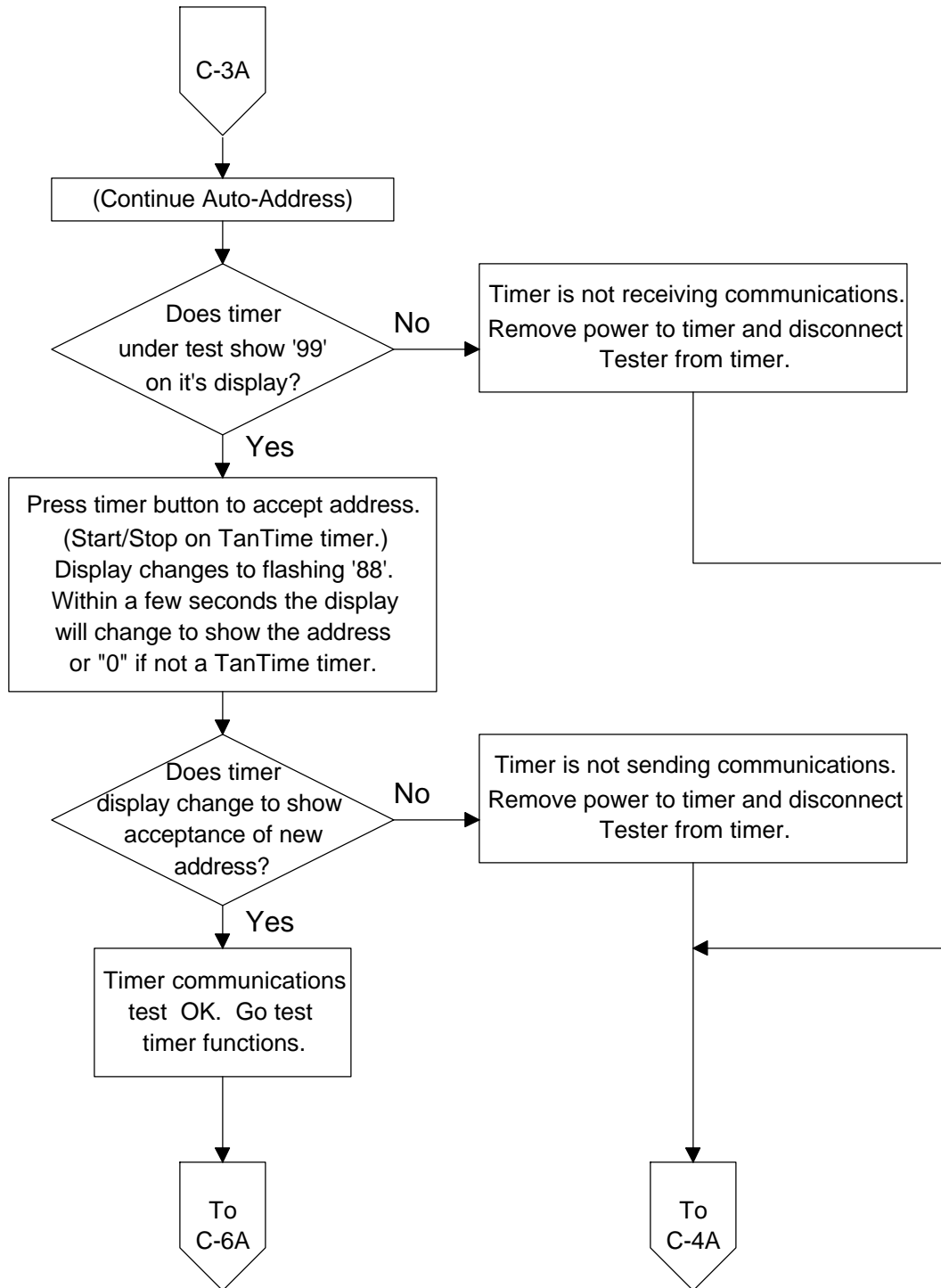
Testing a Single Timer



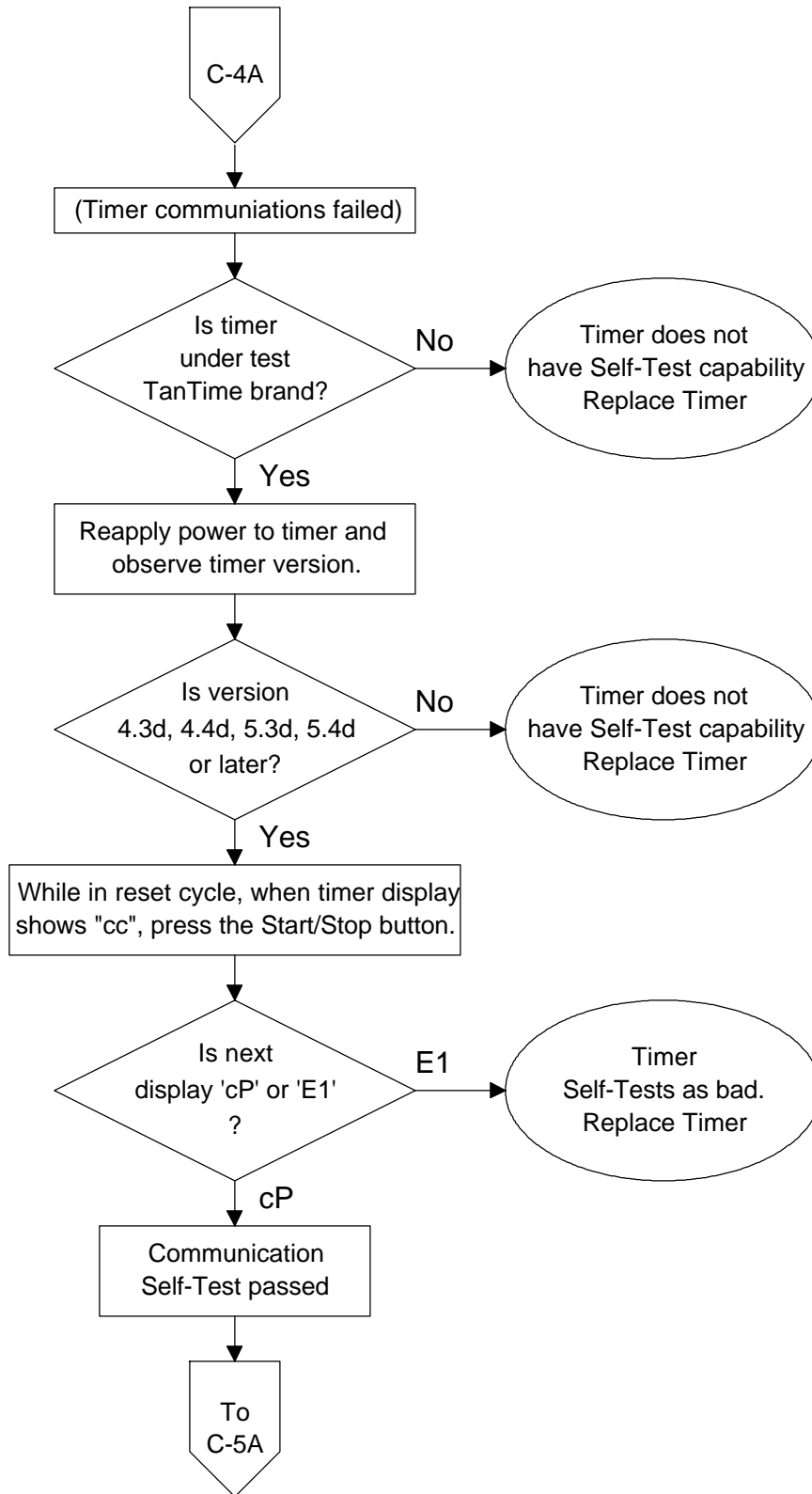
Testing a Single Timer



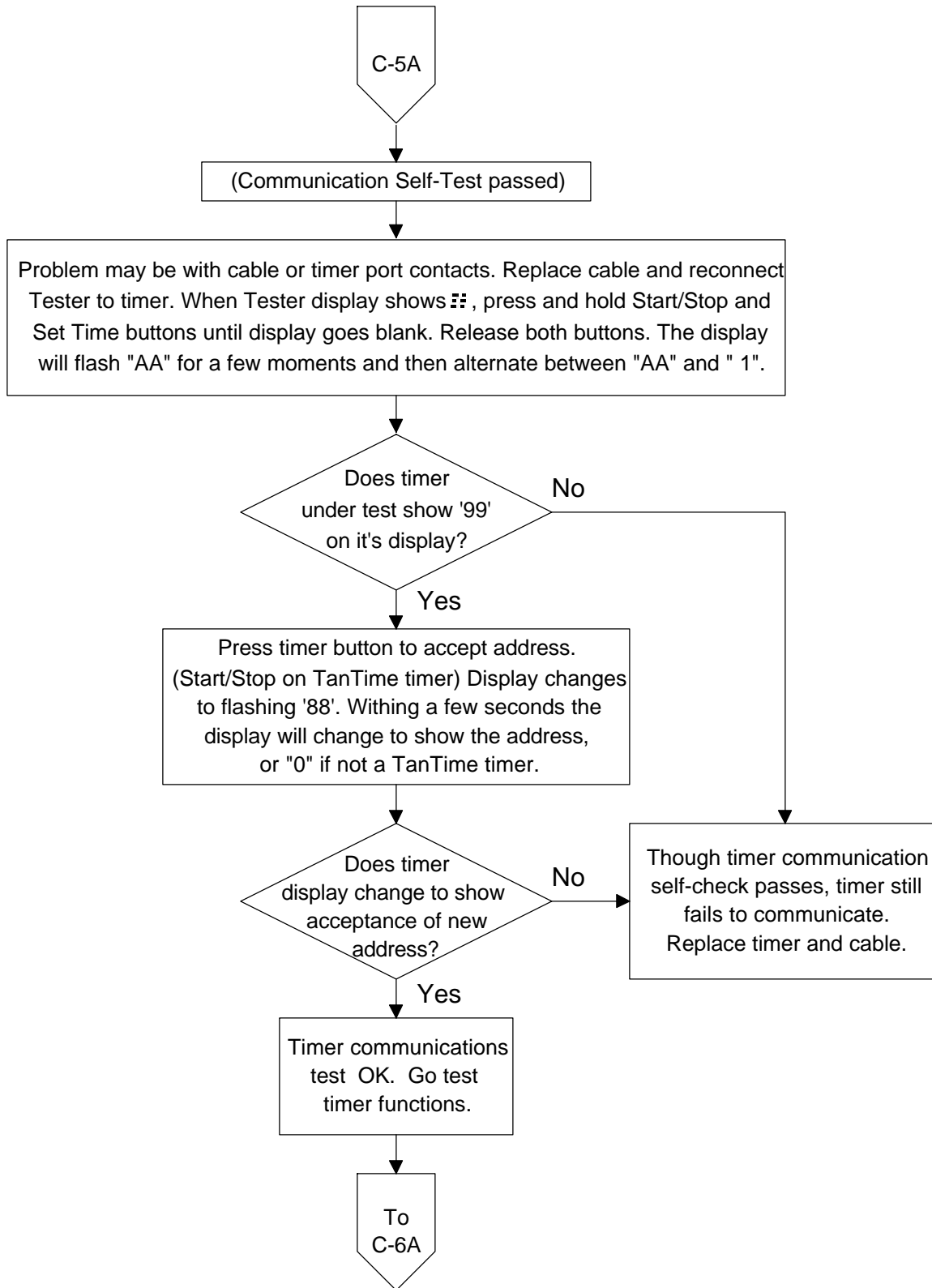
Testing a Single Timer



Testing a Single Timer

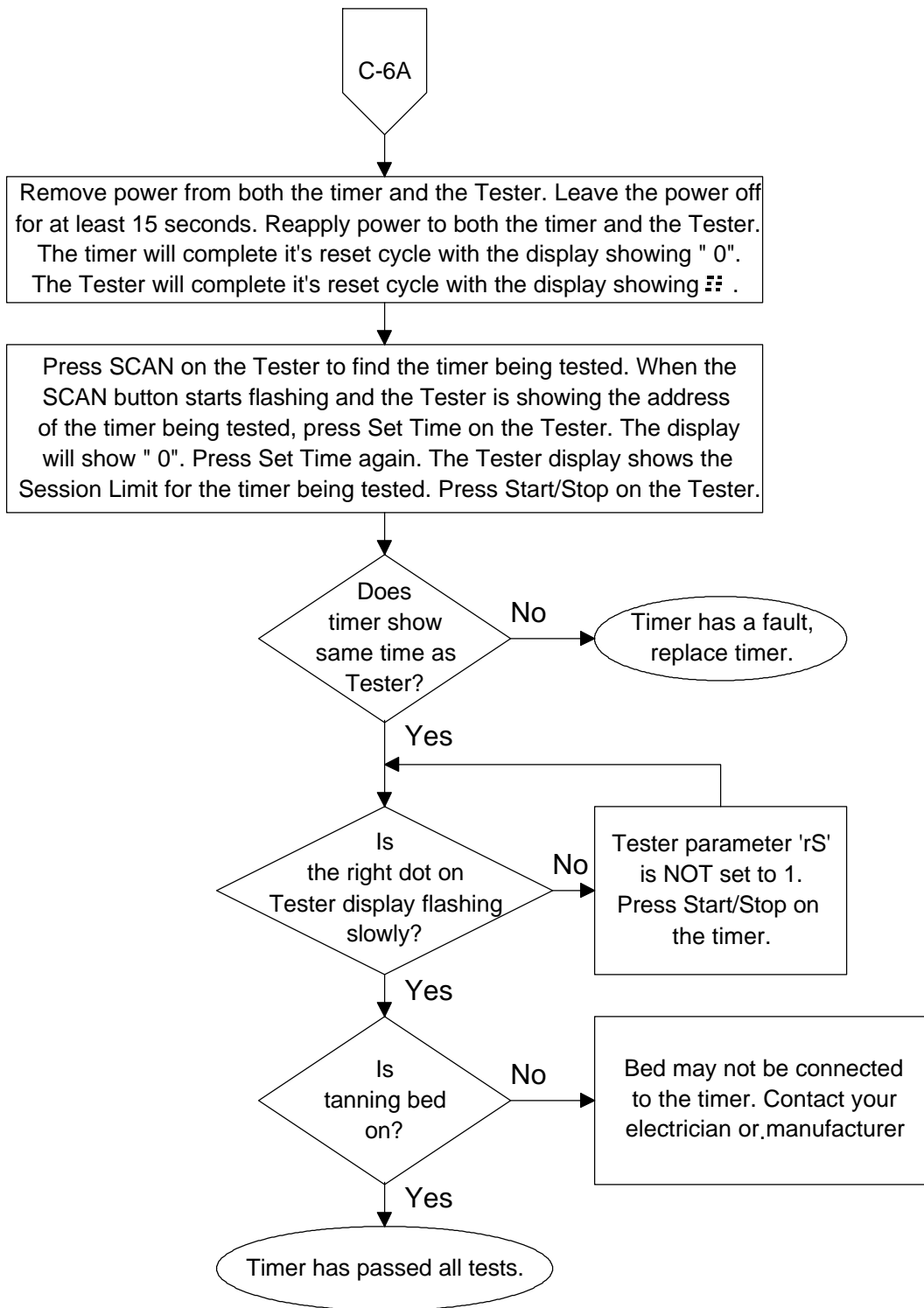


Testing a Single Timer

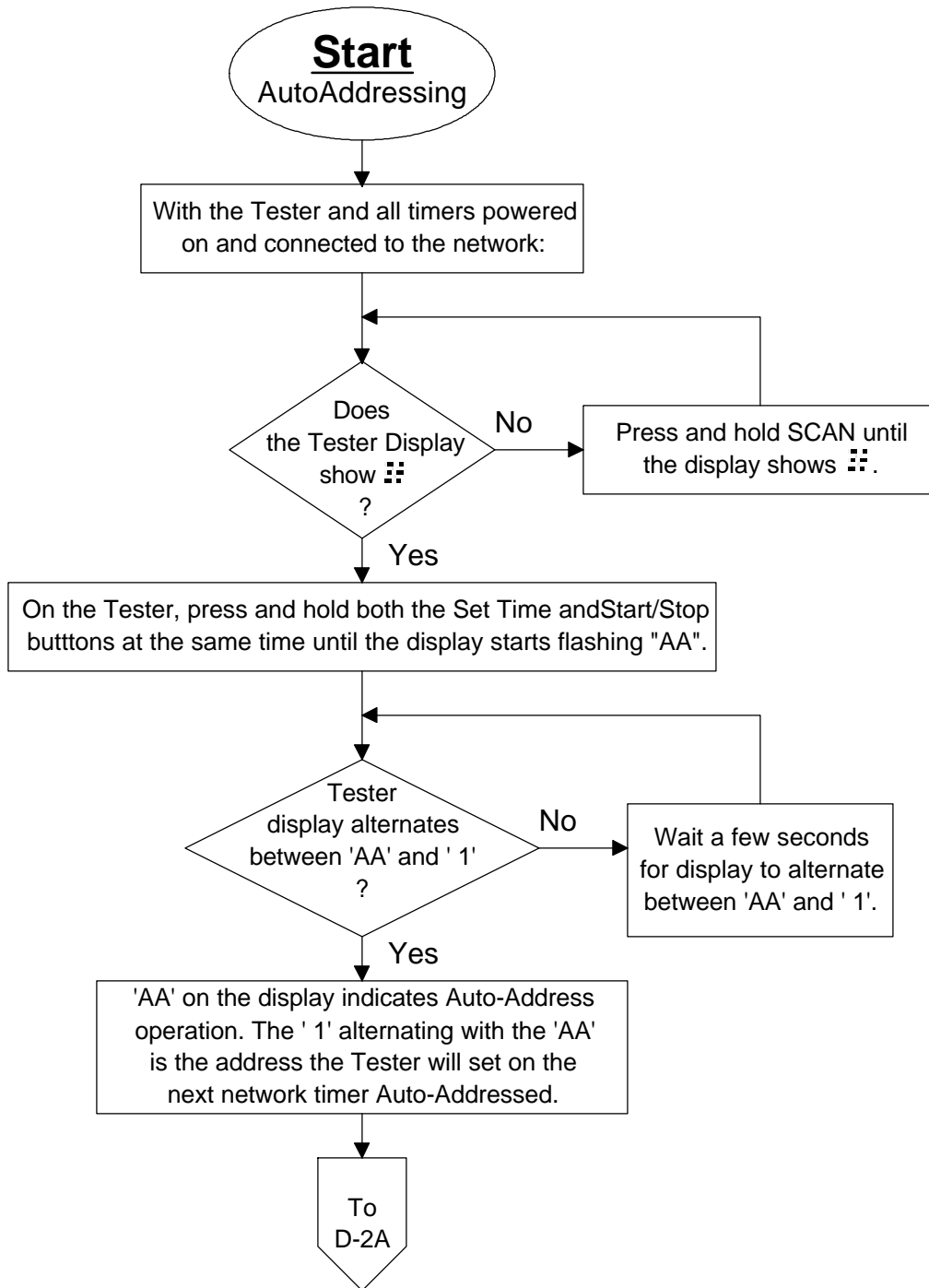


Testing a Single Timer

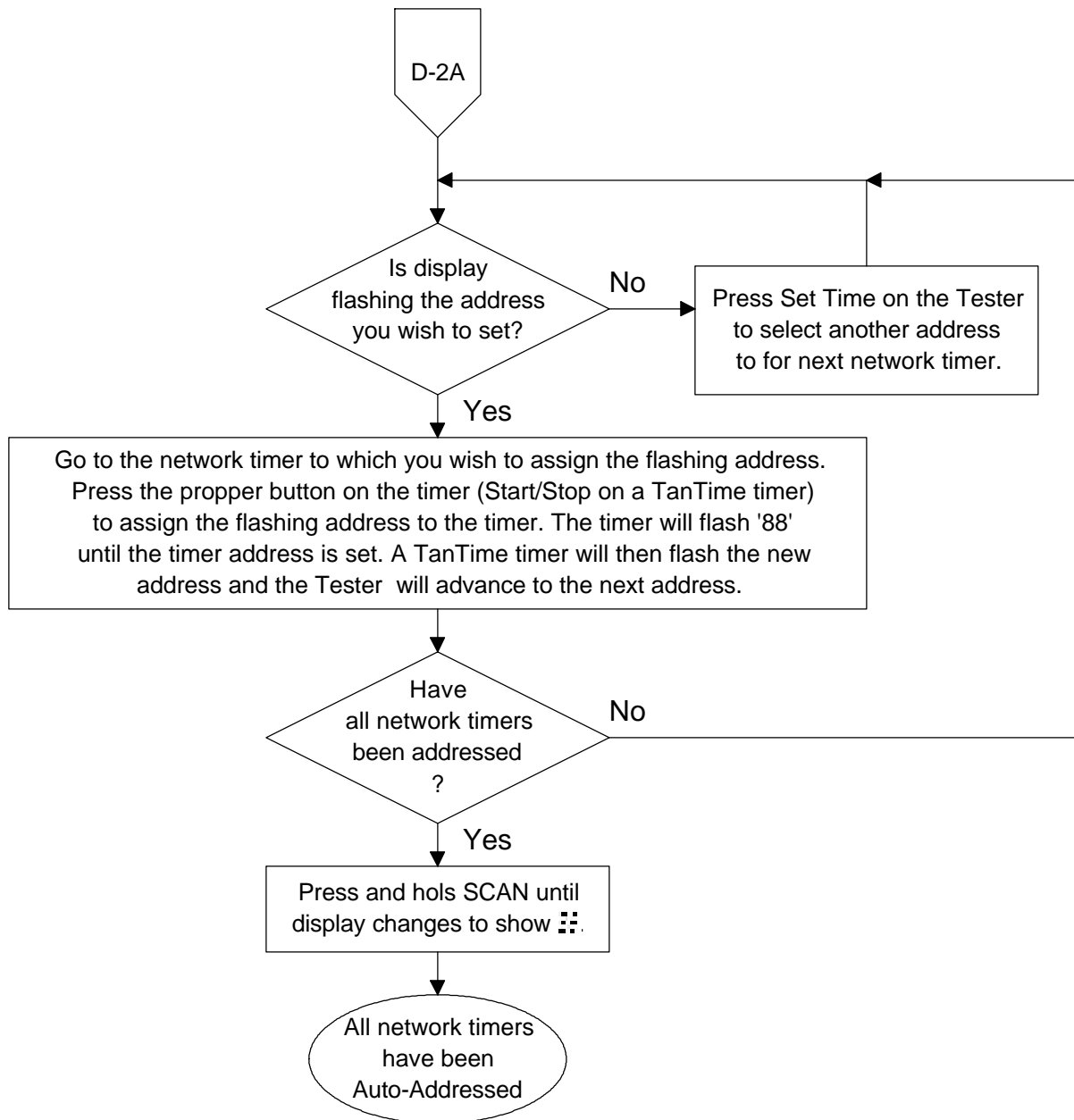
Test Timer Functions



AutoAddressing

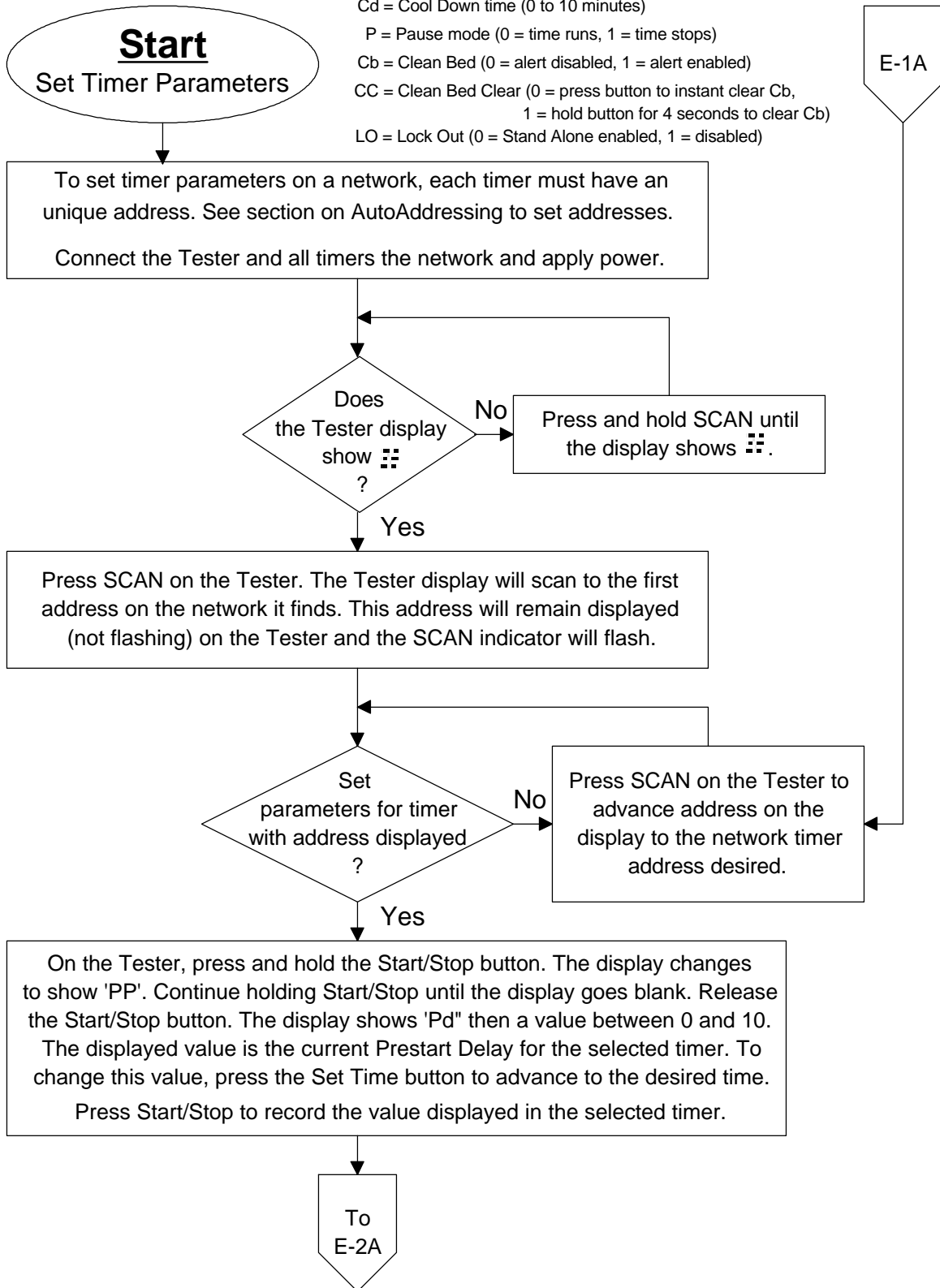


AutoAddressing

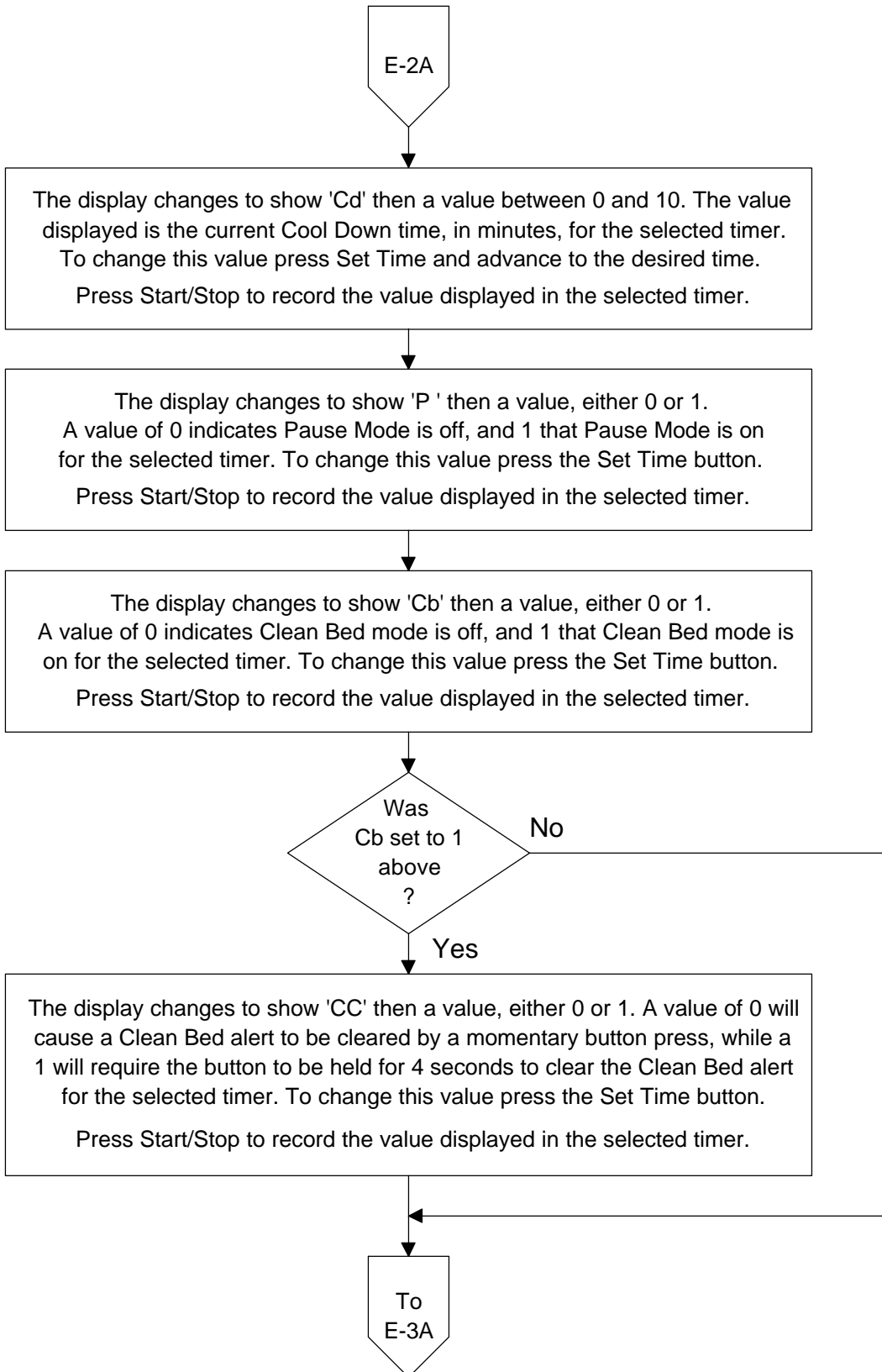


Setting Timer Parameters

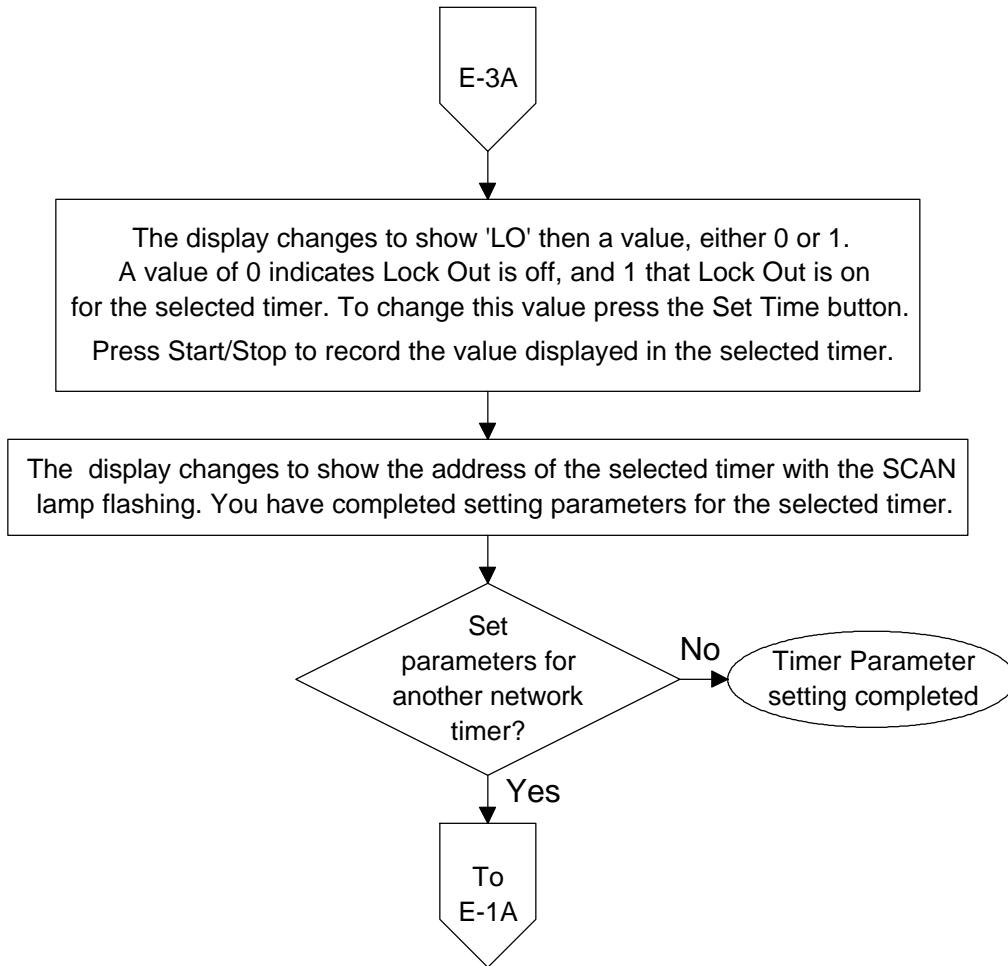
Pd = Prestart Delay time (0 to 10 minutes)
 Cd = Cool Down time (0 to 10 minutes)
 P = Pause mode (0 = time runs, 1 = time stops)
 Cb = Clean Bed (0 = alert disabled, 1 = alert enabled)
 CC = Clean Bed Clear (0 = press button to instant clear Cb,
 1 = hold button for 4 seconds to clear Cb)
 LO = Lock Out (0 = Stand Alone enabled, 1 = disabled)



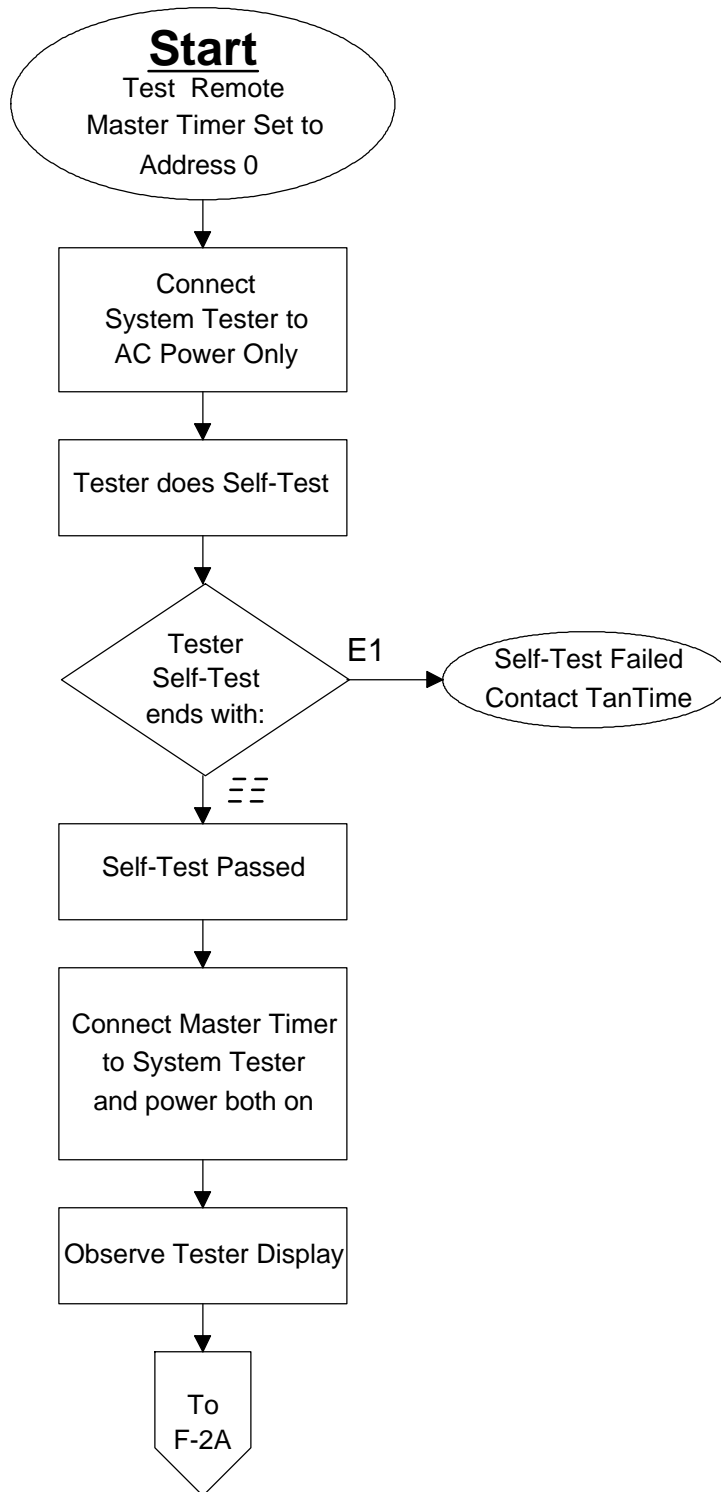
Setting Timer Parameters



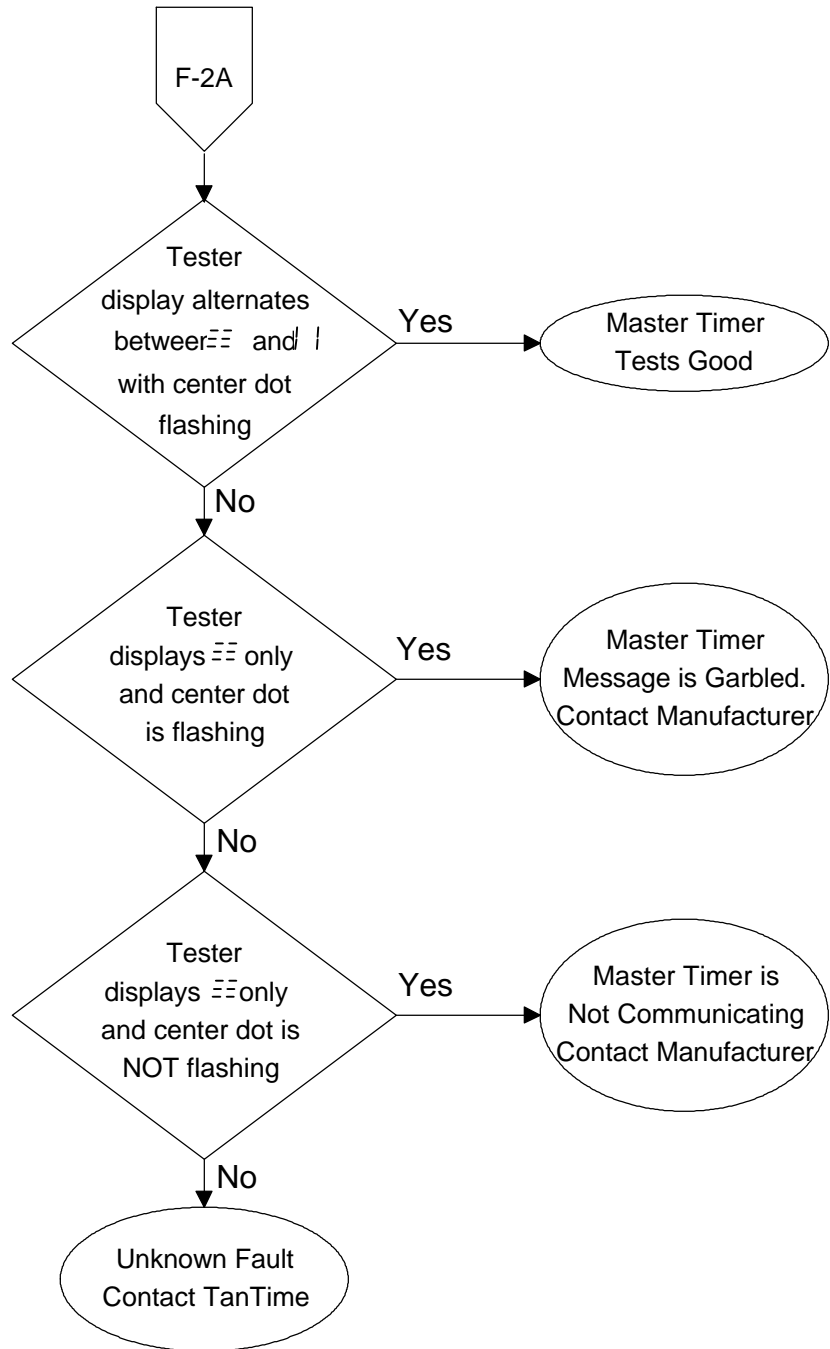
Setting Timer Parameters



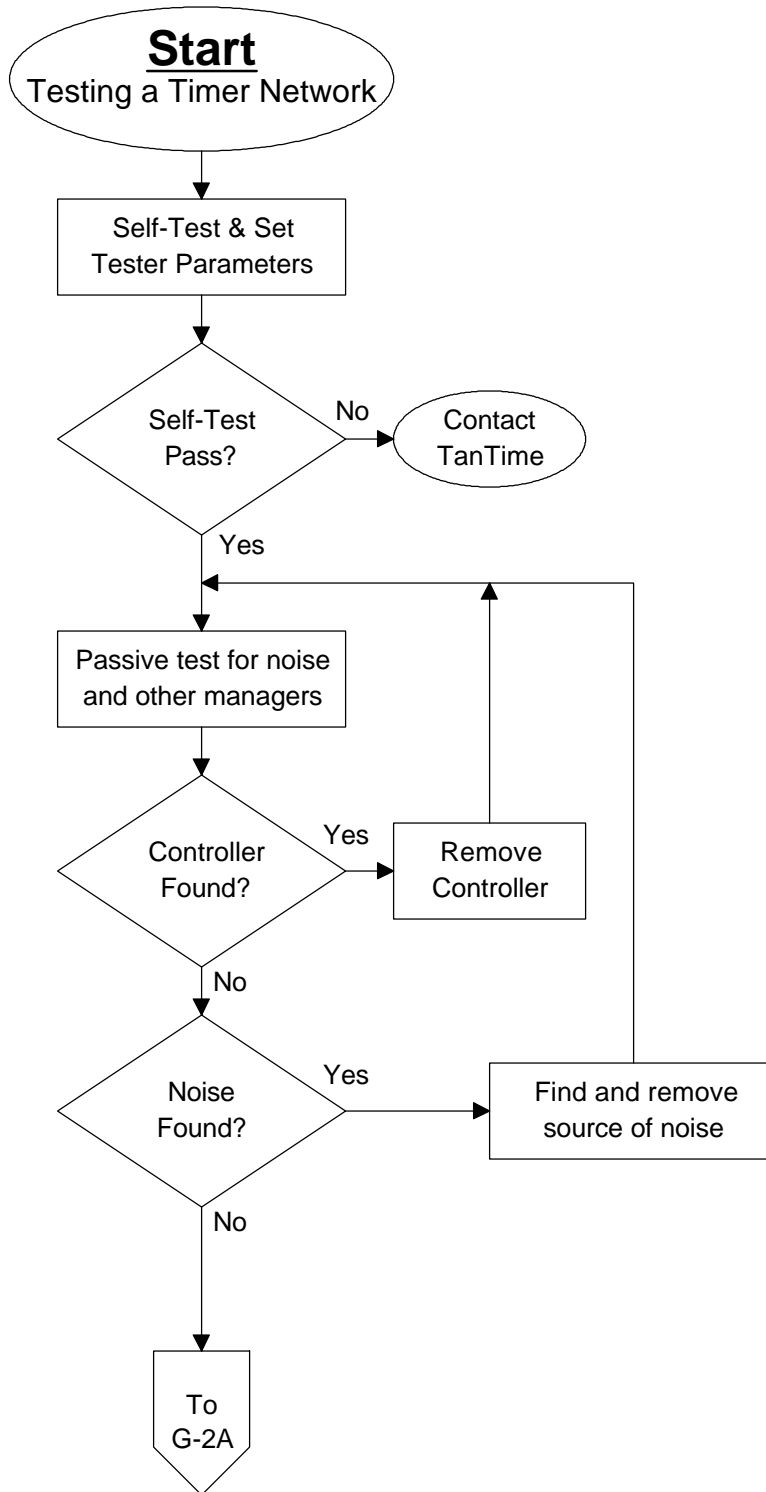
Testing a Master Timer



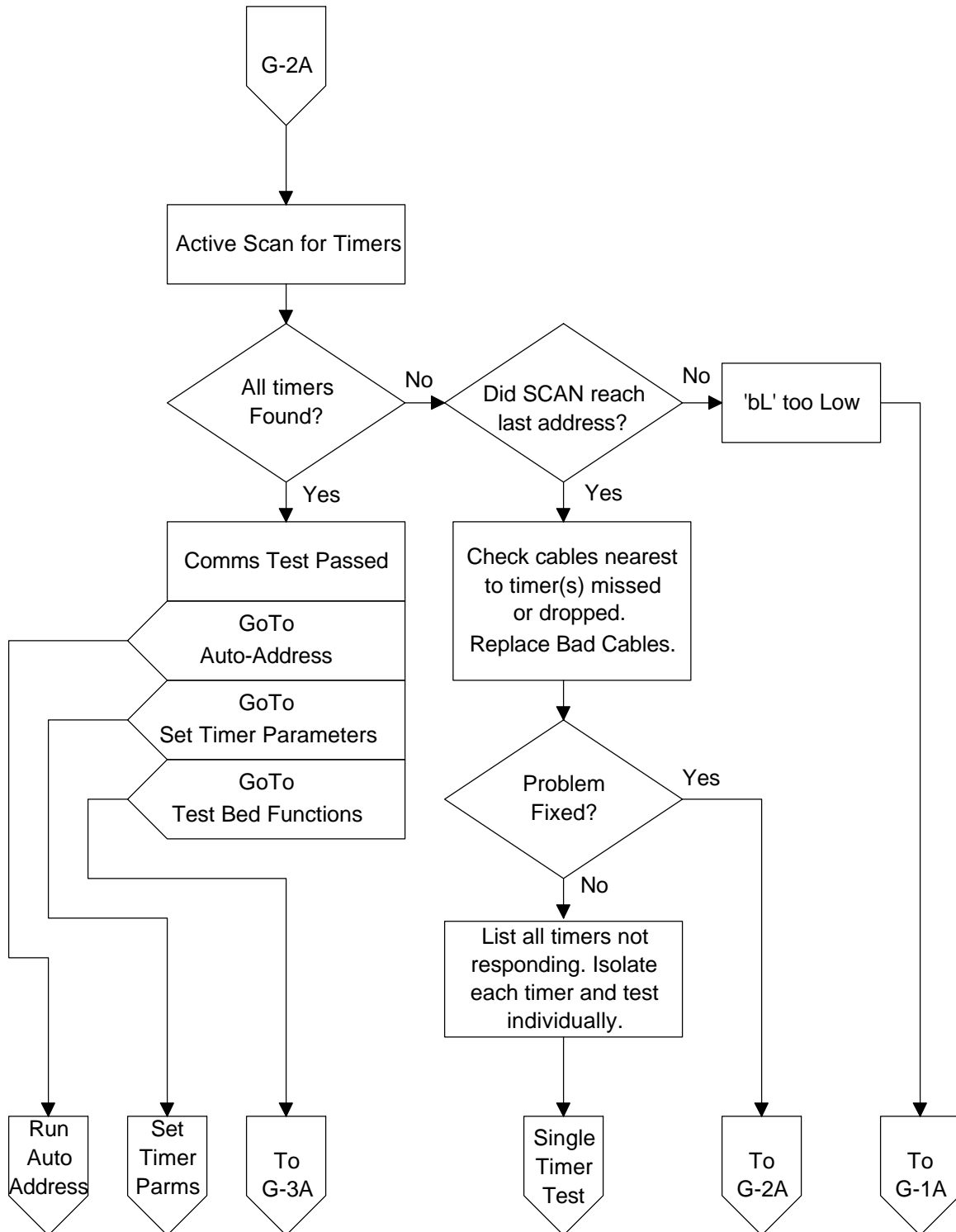
Testing a Master Timer



Network Test Overview



Network Test Overview



Network Test Overview

